



LENNAR®

Solterra

in Sunrise, FL





Scan for online
brochure

Solterra is a master-planned community offering new townhomes and multi-family homes with an array of amenities, now selling in Sunrise, FL.

Aurora Collection



Elaris

From \$569,990

1,426 sq. ft. · 2-story

2 bed · 2 ba · 1 half ba · 0 car garage



Olaria

From \$589,990

1,633 sq. ft. · 2-story

3 bed · 2 ba · 1 half ba · 0 car garage

Lusso Collection



Amara

From \$622,990

1,776 sq. ft. · 2-story

3 bed · 2 ba · 1 half ba · 1 car garage



Bellini

From \$637,990

1,785 sq. ft. · 2-story

3 bed · 2 ba · 1 half ba · 1 car garage



Marani

From \$649,990

1,874 sq. ft. · 2-story

4 bed · 2 ba · 1 half ba · 1 car garage

Radiance Collection



Aviana

From \$745,990

1,730 sq. ft. · 2-story

3 bed · 2 ba · 1 half ba · 1 car garage



Illara

From \$764,990

1,827 sq. ft. · 2-story

2 bed · 2 ba · 1 half ba · 2 car garage



Lunara

From \$784,990

1,924 sq. ft. · 2-story

3 bed · 2 ba · 1 half ba · 1 car garage

Solterra, cont.



Solterra is a master-planned community offering new townhomes and multi-family homes with an array of amenities, now selling in Sunrise, FL.



Scan for online
brochure

Radiance Collection, cont.



Velora

From \$833,990

2,047 sq. ft. · 2-story

4 bed · 3 ba · 1 car garage



Solina

From \$804,990

2,047 sq. ft. · 2-story

3 bed · 2 ba · 1 half ba · 2 car garage

Elaris

Aurora Collection



From \$569,990

1,426 sq. ft.

2-story

2 bed · 2 ba · 1 half ba

0 car garage

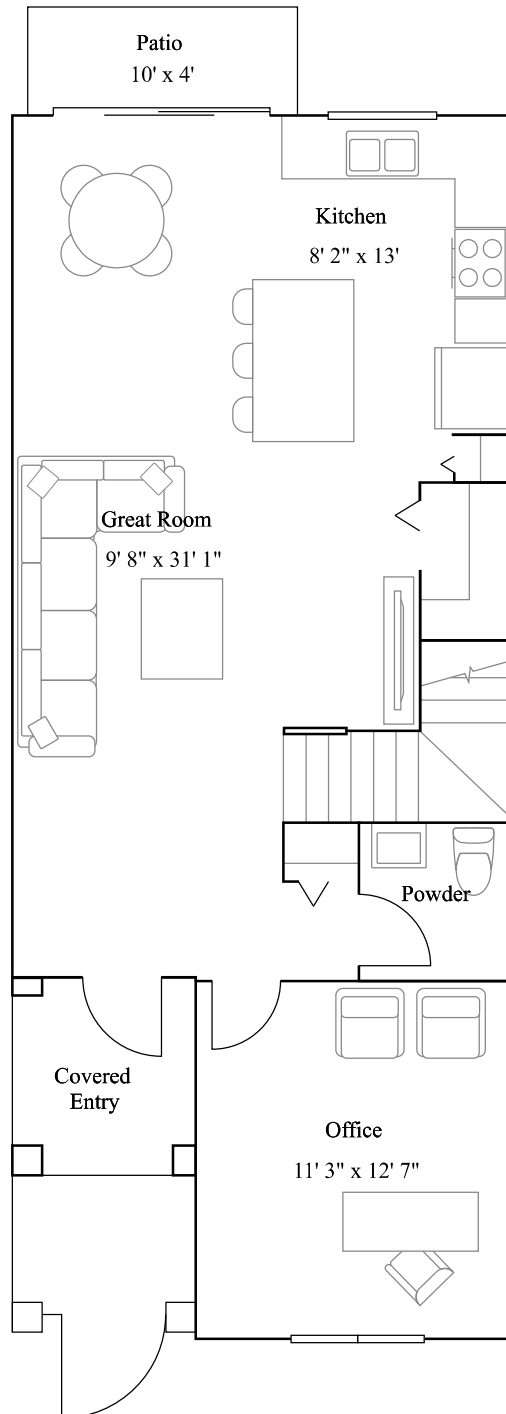


Santa Barbara

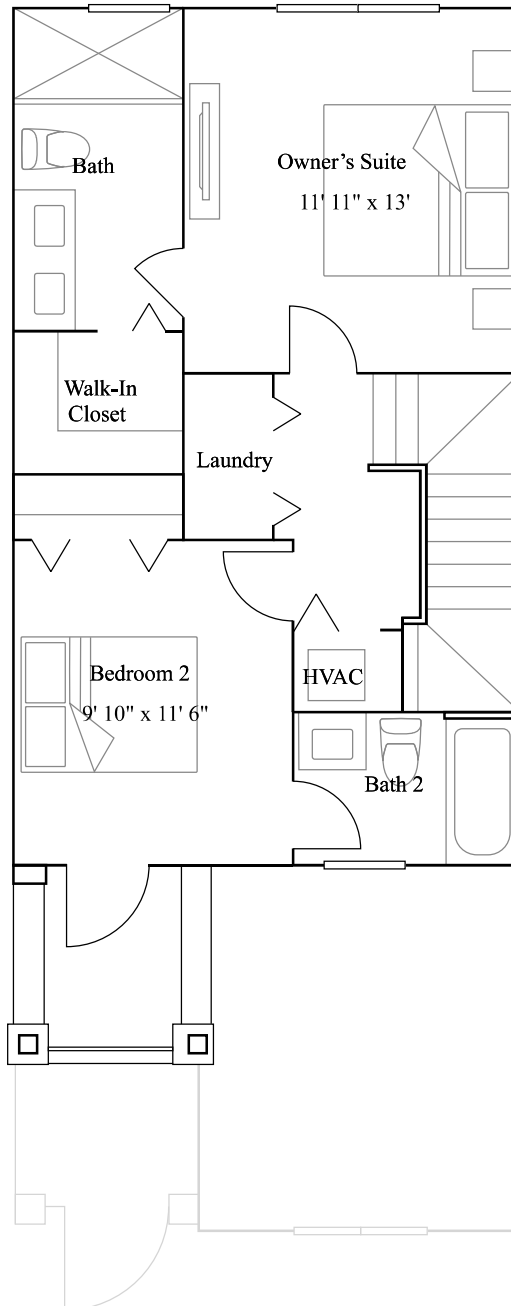


Coastal

1st Floor



2nd Floor



Olaria

Aurora Collection



From \$589,990

1,633 sq. ft.

2-story

3 bed · 2 ba · 1 half ba

0 car garage

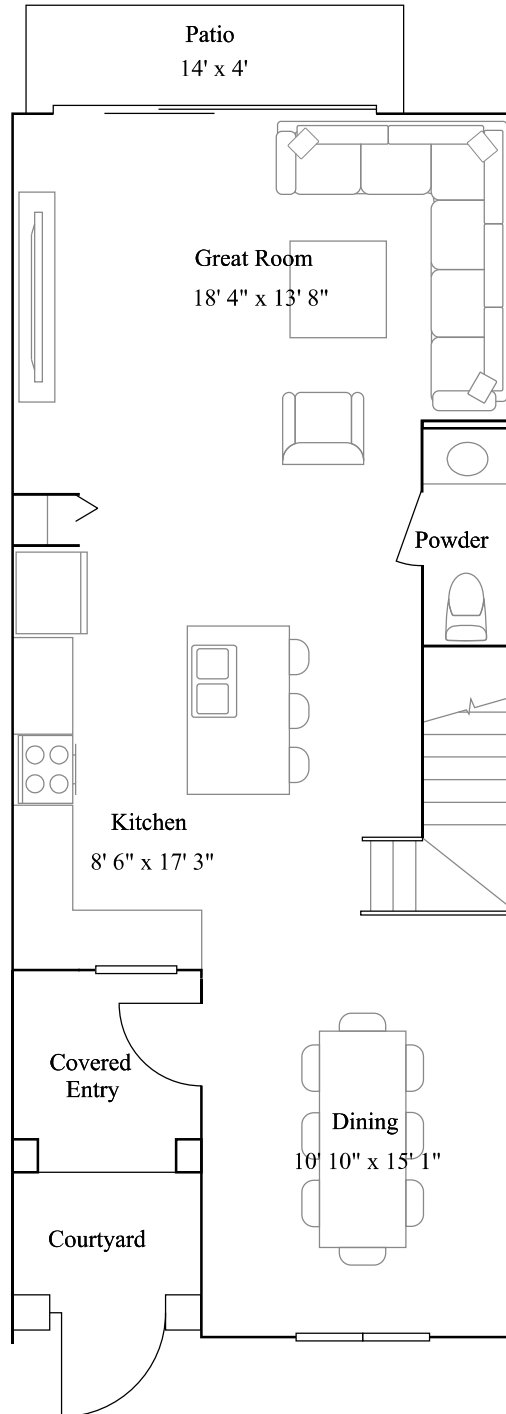


Coastal

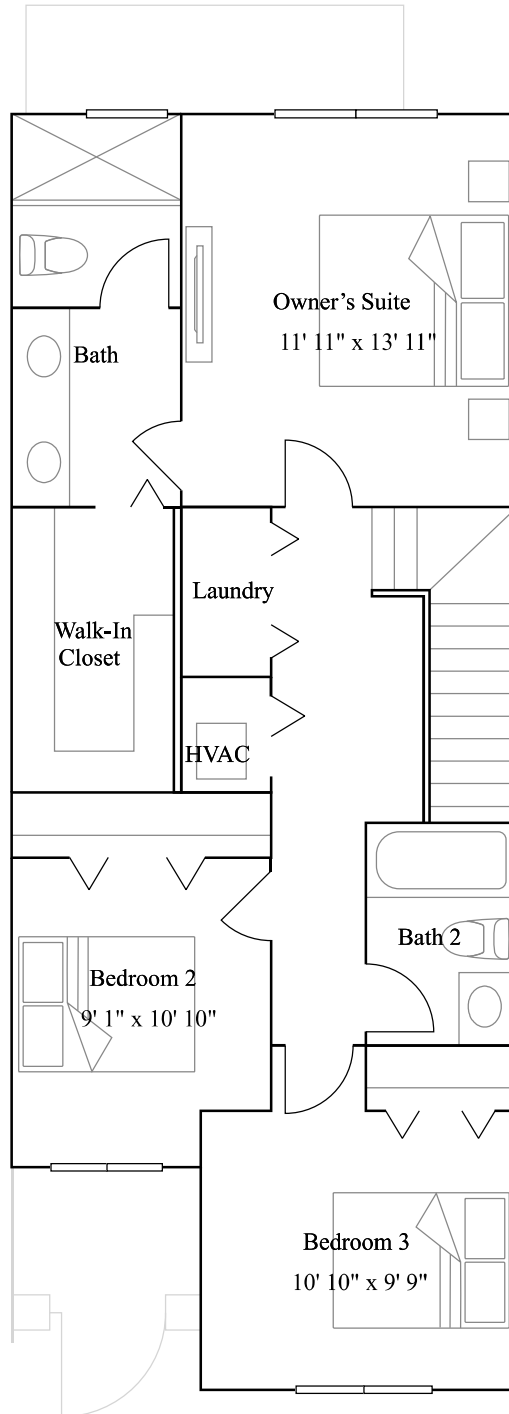


Santa Barbara

1st Floor



2nd Floor



Amara

Lusso Collection



From \$622,990

1,776 sq. ft.

2-story

3 bed · 2 ba · 1 half ba

1 car garage

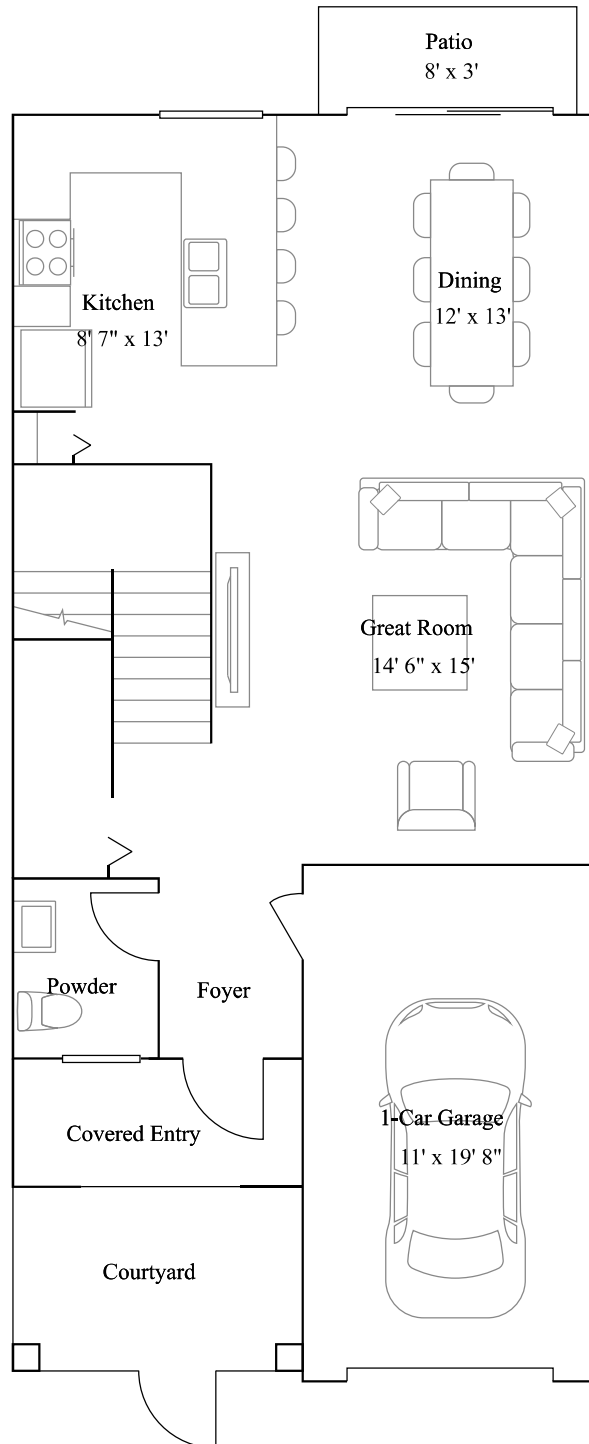


Coastal

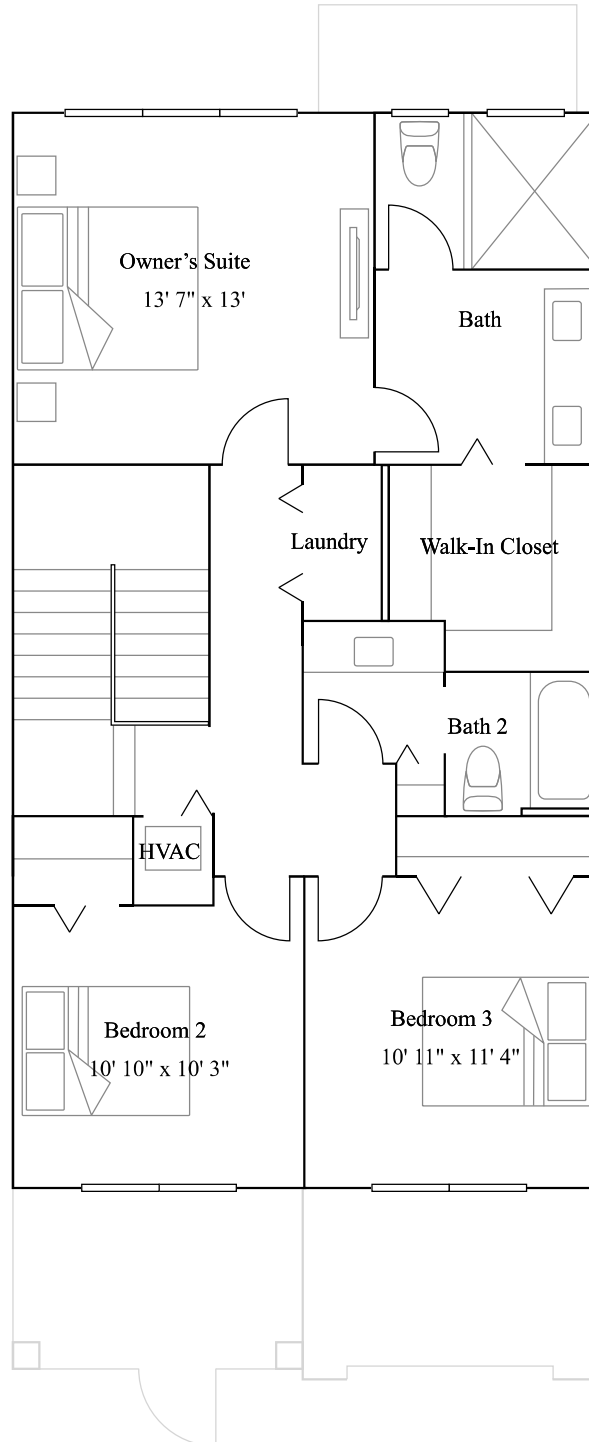


Santa Barbara

1st Floor



2nd Floor



Bellini

Lusso Collection



From \$637,990

1,785 sq. ft.

2-story

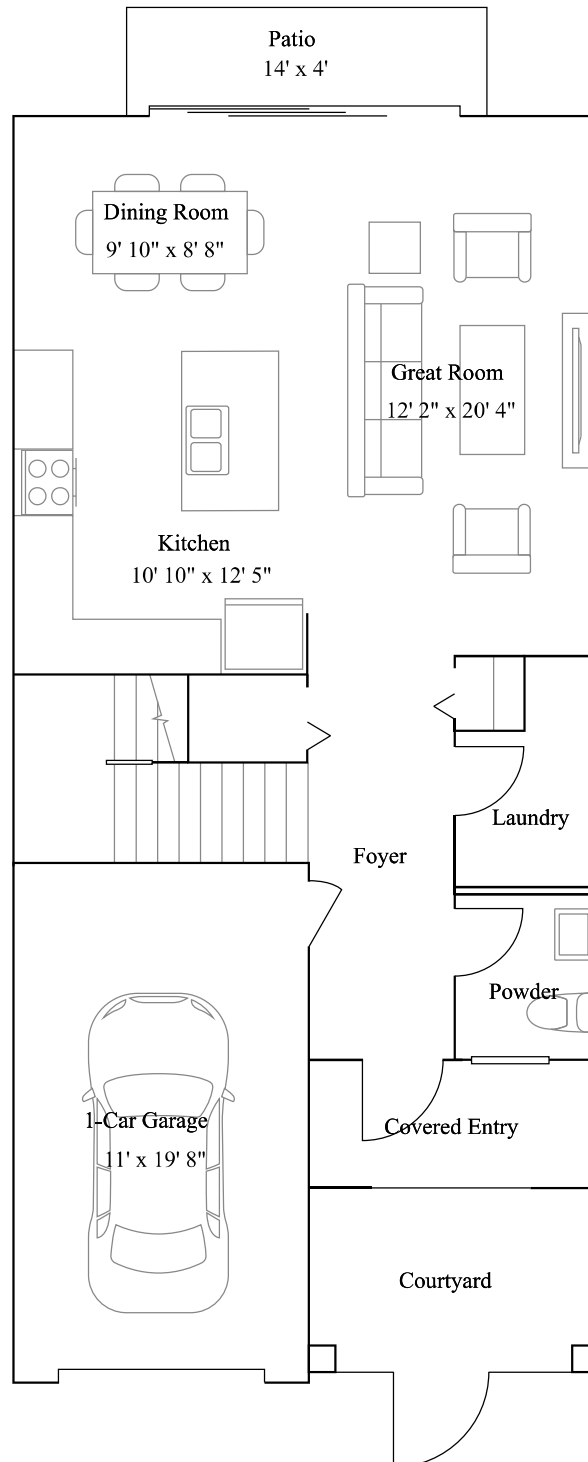
3 bed · 2 ba · 1 half ba

1 car garage

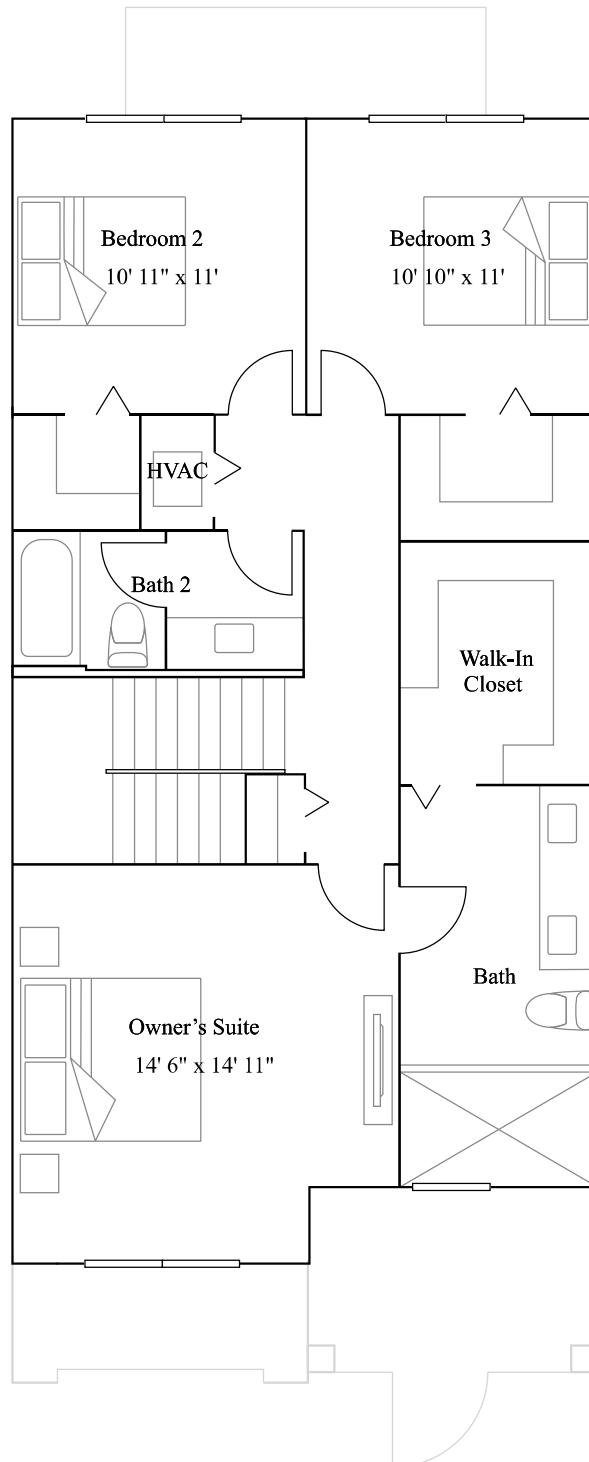


Coastal

1st Floor



2nd Floor



Marani

Lusso Collection



From \$649,990

1,874 sq. ft.

2-story

4 bed · 2 ba · 1 half ba

1 car garage



Coastal

Marani

Lusso Collection



From \$649,990

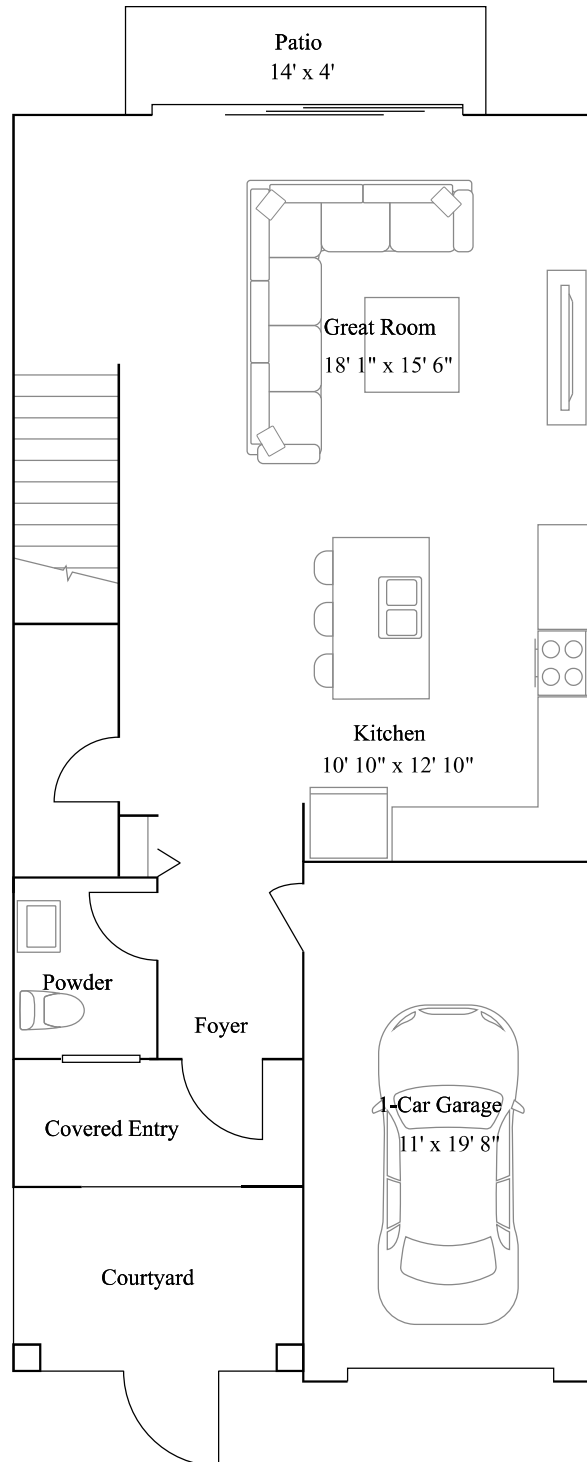
1,874 sq. ft.

2-story

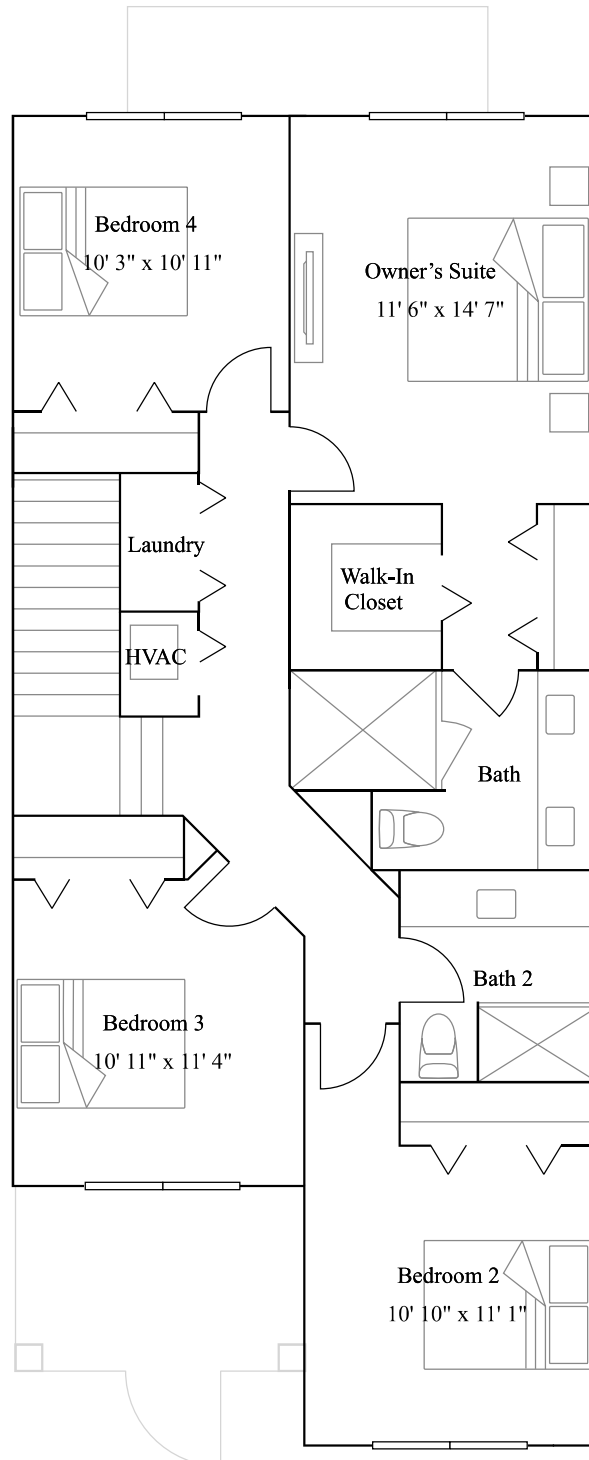
4 bed · 2 ba · 1 half ba

1 car garage

1st Floor



2nd Floor



Aviana

Radiance Collection



From \$745,990

1,730 sq. ft.

2-story

3 bed · 2 ba · 1 half ba

1 car garage



Exterior CN

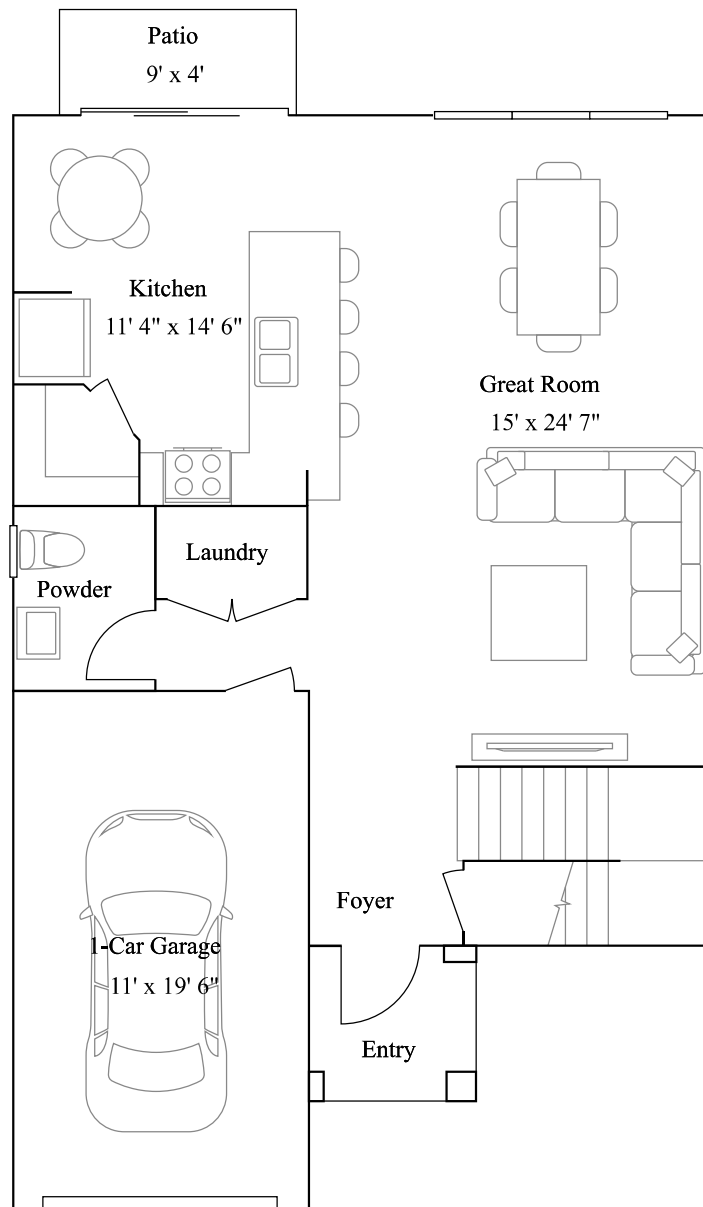


Exterior CO

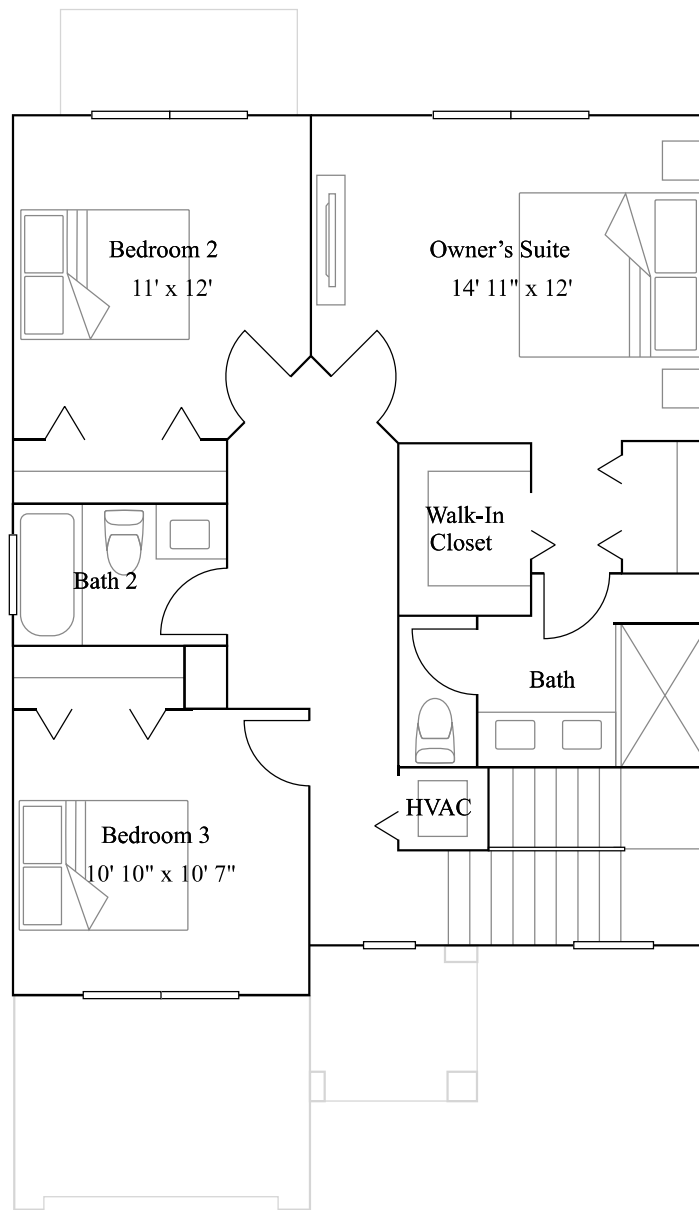


Exterior SB

1st Floor



2nd Floor



Illara

Radiance Collection



From \$764,990

1,827 sq. ft.

2-story

2 bed · 2 ba · 1 half ba

2 car garage



Exterior CN



Exterior CO



Exterior SB

Illara

Radiance Collection



From \$764,990

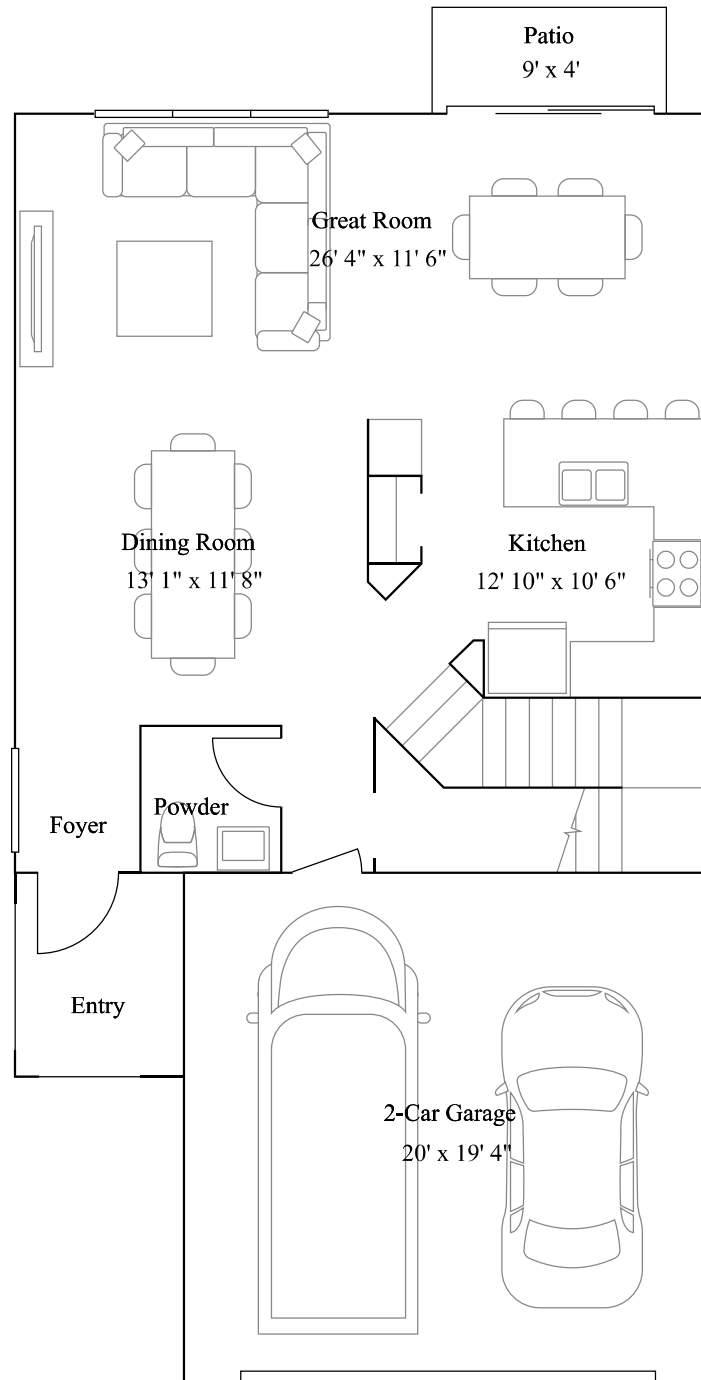
1,827 sq. ft.

2-story

2 bed · 2 ba · 1 half ba

2 car garage

1st Floor



Illara

Radiance Collection



From \$764,990

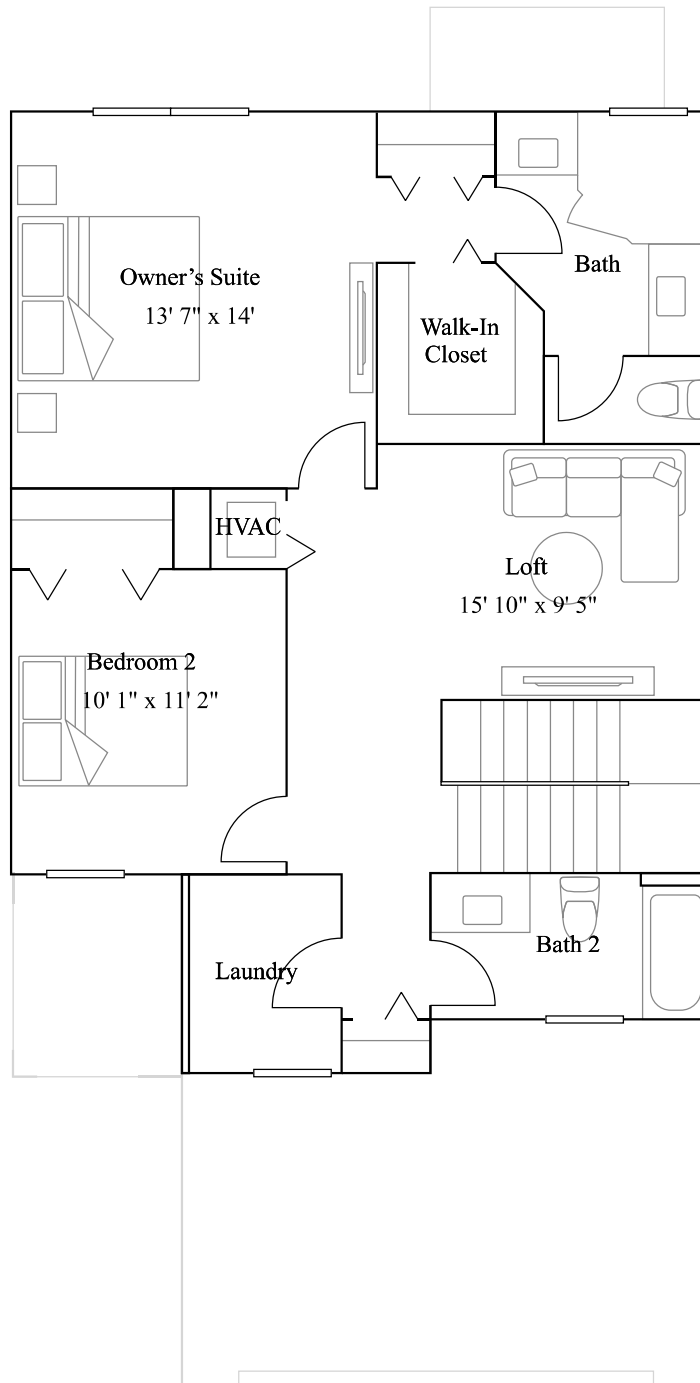
1,827 sq. ft.

2-story

2 bed · 2 ba · 1 half ba

2 car garage

2nd Floor



Lunara

Radiance Collection



From \$784,990

1,924 sq. ft.

2-story

3 bed · 2 ba · 1 half ba

1 car garage



Exterior CN



Exterior CO



Exterior SB

Lunara

Radiance Collection



From \$784,990

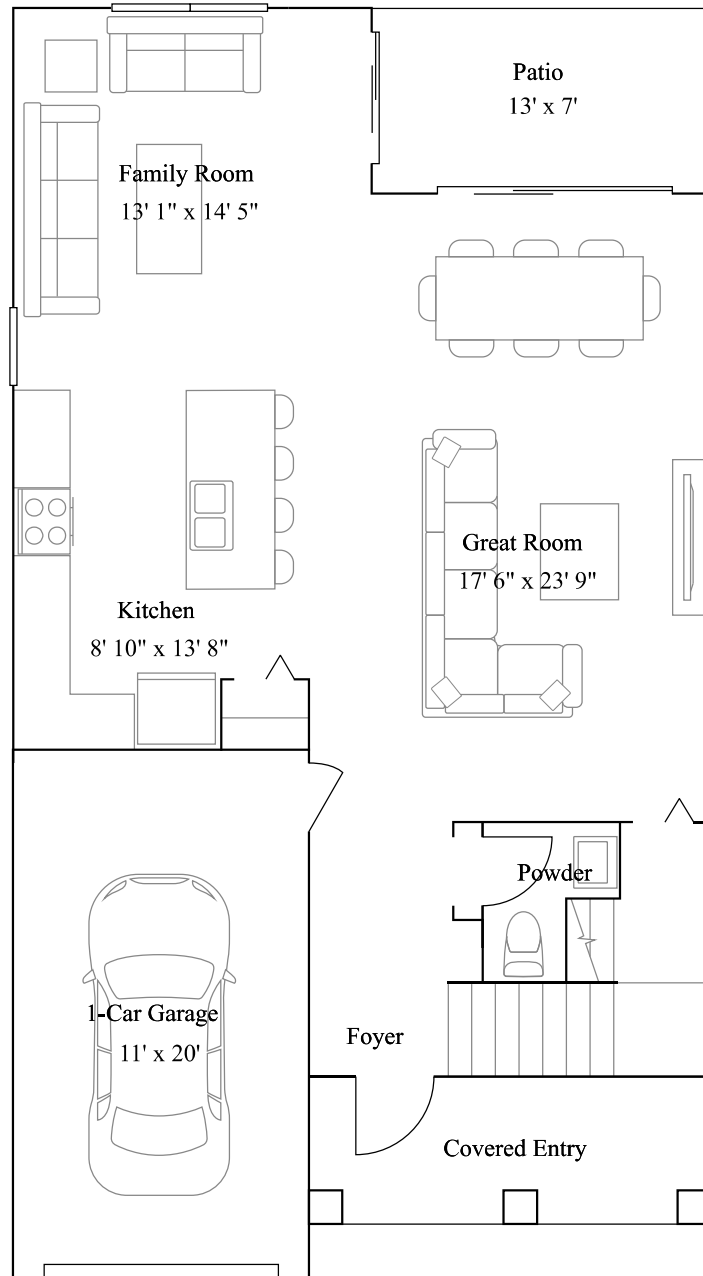
1,924 sq. ft.

2-story

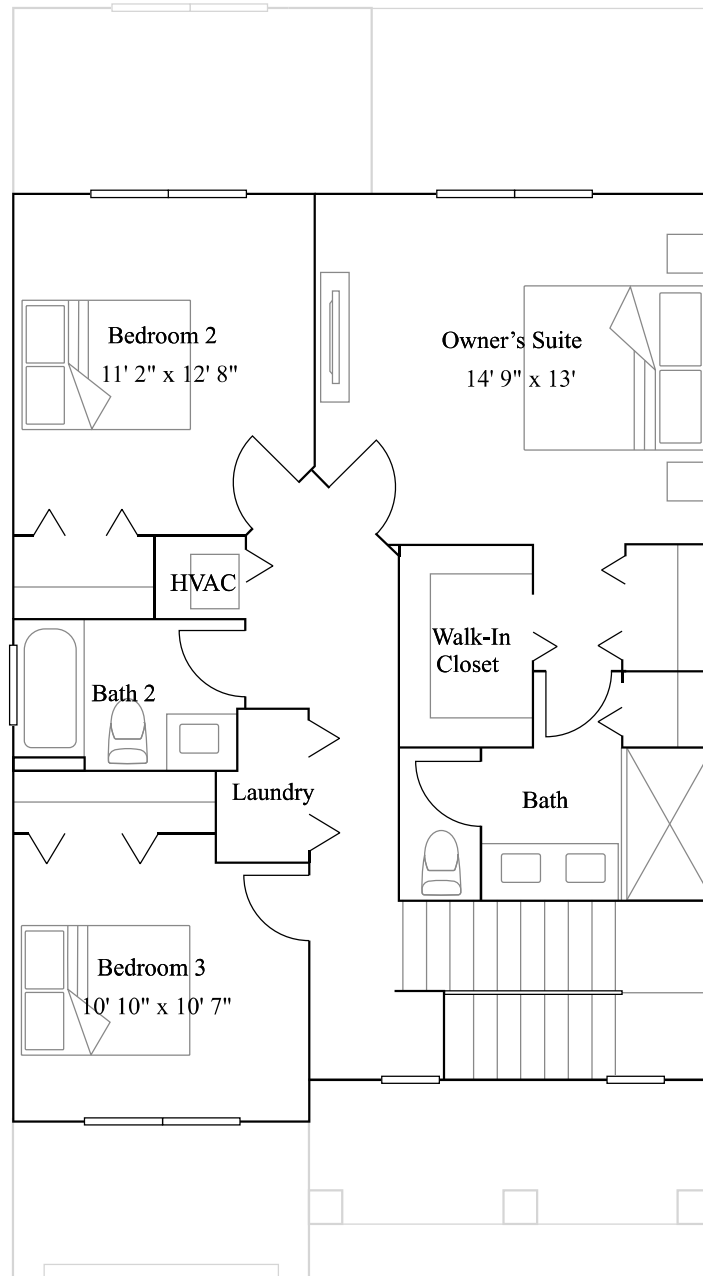
3 bed · 2 ba · 1 half ba

1 car garage

1st Floor



2nd Floor



Velora

Radiance Collection



From \$833,990

2,047 sq. ft.

2-story

4 bed · 3 ba

1 car garage



Exterior CN

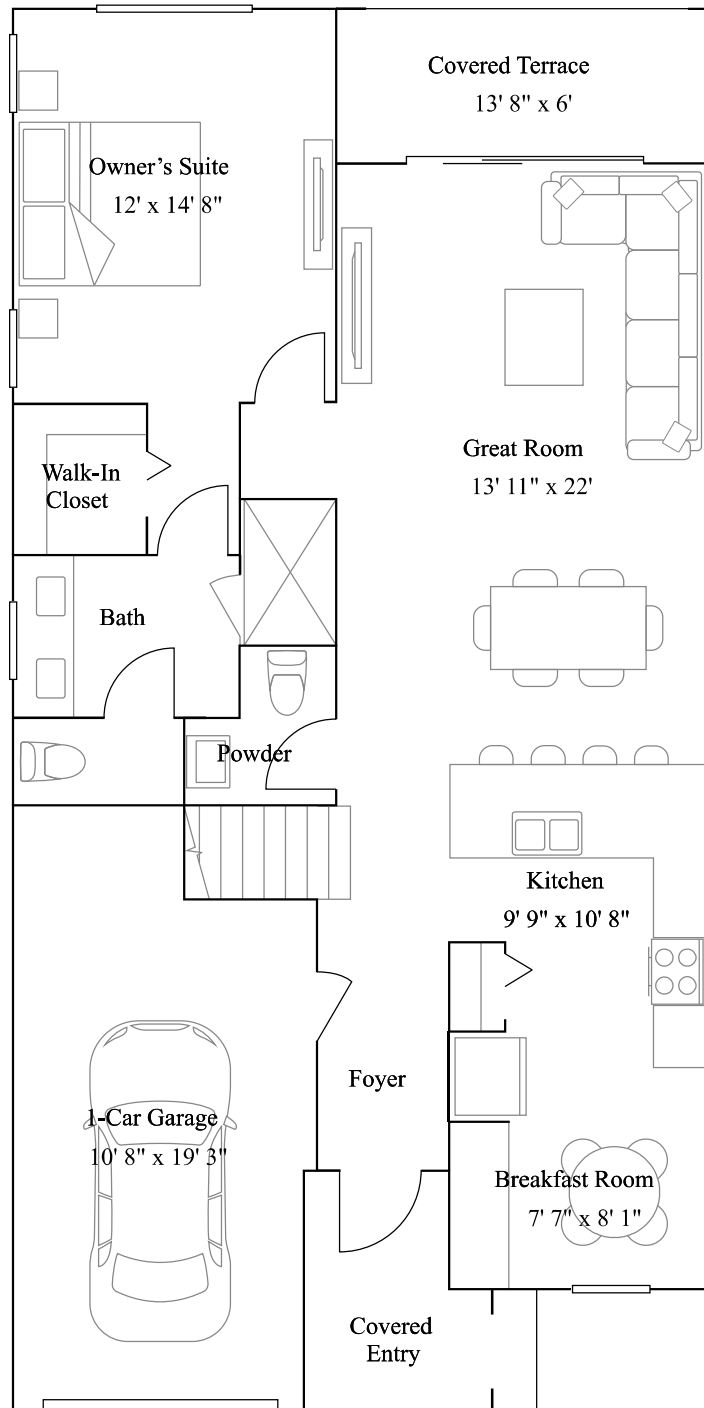


Exterior CO

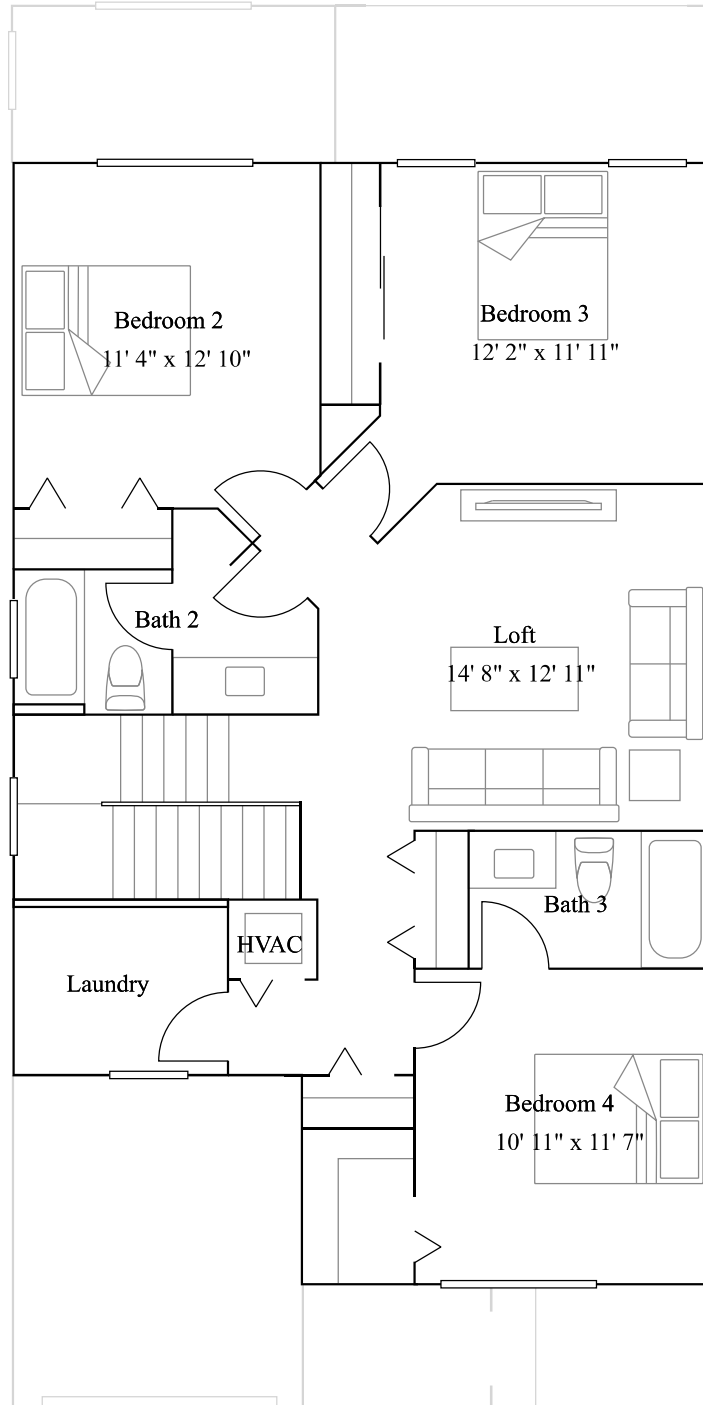


Exterior SB

1st Floor



2nd Floor



Solina

Radiance Collection



From \$804,990

2,047 sq. ft.

2-story

3 bed · 2 ba · 1 half ba

2 car garage



Exterior CN



Exterior CO



Exterior SB

Solina

Radiance Collection



From \$804,990

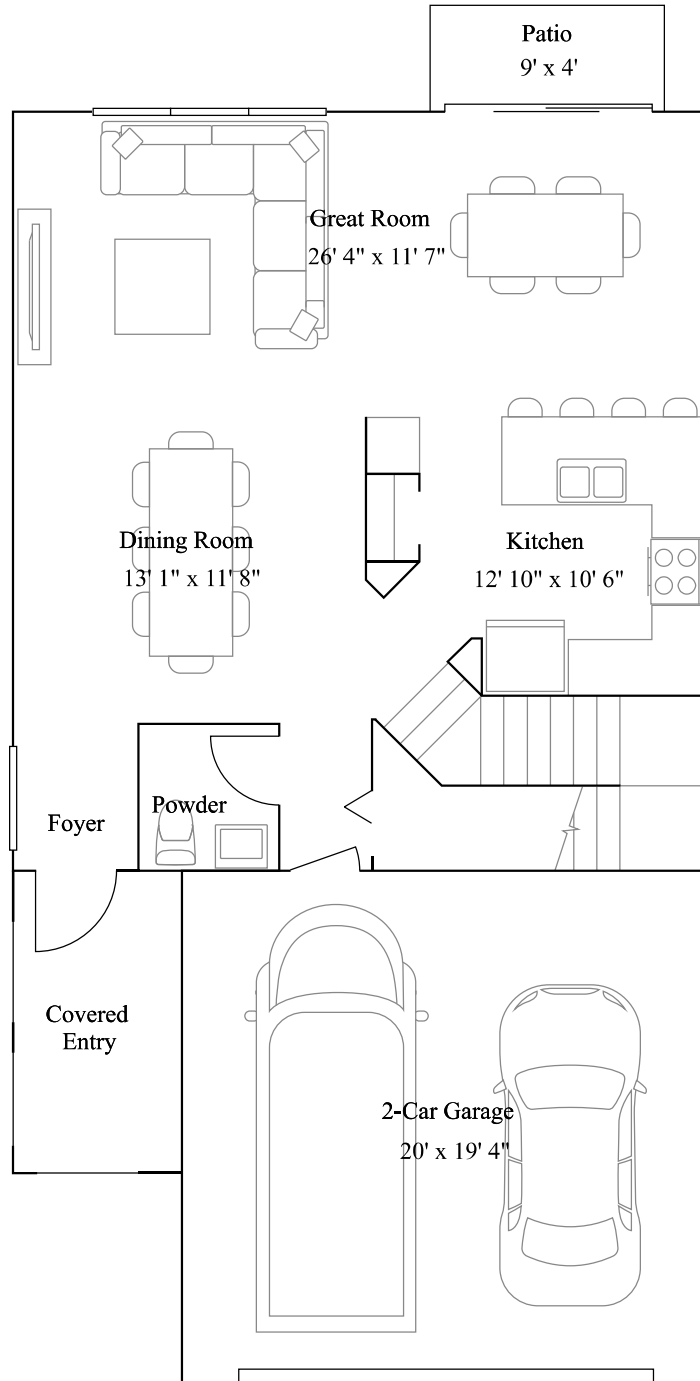
2,047 sq. ft.

2-story

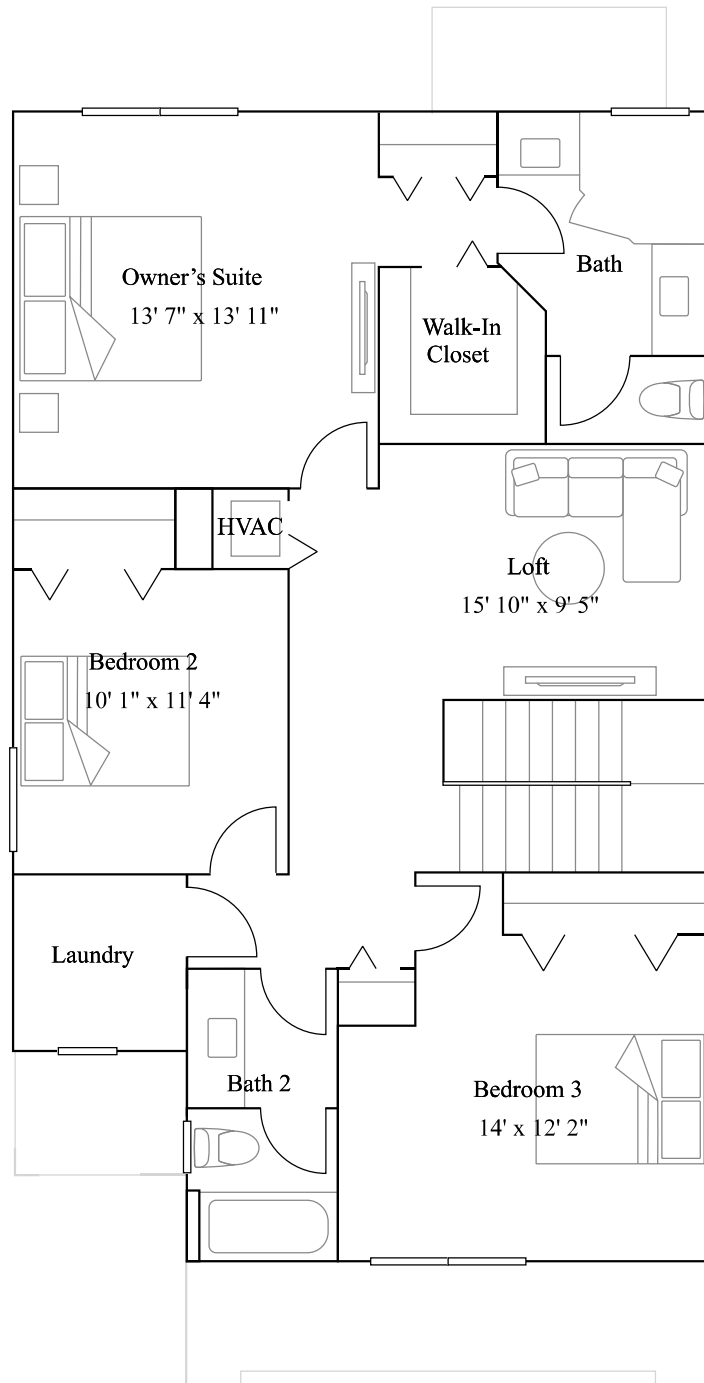
3 bed · 2 ba · 1 half ba

2 car garage

1st Floor



2nd Floor



Everything Your New Home Needs — Aurora Collection

With Everything's Included®, Lennar has reimagined the homebuying experience by including the most desired home features at no extra cost to you. Features may vary by community and floorplan.



**EVERYTHING'S
INCLUDED®**



Exterior

- Elegant front elevations with designer exterior stone and decorative shutters (per plan)
- Beautiful and enduring concrete roof tiles
- Quality CBS construction
- Brick paver walkway, driveway, entry and patio areas (per plan)
- Pre-selected designer exterior paint schemes
- Convenient covered entry
- Code compliant entry door
- Impact resistant windows and sliding glass doors
- Privacy fence in rear yard

Interior

- 18" x 18" ceramic tile in foyer, kitchen, great room, dining room, laundry, and A/C closet in a choice of decorator colors
- Plush stain resistant carpeting with padding in designated areas
- Raised-panel interior doors
- Raised-panel bi-fold closet doors
- Colonial style baseboards and door casings
- Elegant interior door hardware
- Designer quality paint on all walls and ceilings
- Textured walls and ceilings in designated areas

Everything Your New Home Needs — Aurora Collection (cont.)

With Everything's Included®, Lennar has reimagined the homebuying experience by including the most desired home features at no extra cost to you. Features may vary by community and floorplan.



Interior

- Rocker-style switches throughout
- Cat6 wiring in kitchen, family room and master bedroom, home run to central distribution panel
- Pre-wired for ceiling fan in family or great room and all bedrooms (per plan)
- Smoke and carbon monoxide detectors throughout
- Vinyl-clad ventilated closet shelving
- Electric water heater
- Central air conditioning and heating system

Kitchen

- Kitchen cabinets with 36" uppers and brushed nickel hardware
- Pantry closet with ventilated shelves
- Porcelain countertops with 6" backsplash
- Stainless steel kitchen sink and decorative faucet with sprayer
- Food waste disposal
- Quality stainless steel appliance package featuring
- 30" smooth surface electric range with self-cleaning oven
- Over-the-range built-in microwave with recirculating vent
- Multi-cycle dishwasher
- Side-by-Side Style refrigerator
- Recessed LED downlighting

Owners Suite

- Vanity cabinets with brushed nickel hardware in all baths

Everything Your New Home Needs — Aurora Collection (cont.)

With Everything's Included®, Lennar has reimagined the homebuying experience by including the most desired home features at no extra cost to you. Features may vary by community and floorplan.



**EVERYTHING'S
INCLUDED®**



Owners Suite

Shower with clear glass enclosure or fixed glass panel (per plan)

Cultured marble countertops with integrated sinks and designer faucets in all baths

12"x12" Ceramic tile in all bathroom floors and shower walls

6"x 6" Ceramic tile on shower floor

Exhaust fans (per plan)

Recessed LED downlighting

Vanity mirror

Laundry

Connection provided for stackable washer and dryer

Secondary Bathroom

Vanity cabinets with brushed nickel hardware in all baths

Cultured marble countertops with integrated sinks and designer faucets in all baths

Bathtub in secondary bath (per plan)

12"x12" Ceramic tile in all bathroom floors and shower walls

Exhaust fans (per plan)

Recessed LED downlighting

Vanity mirror in all baths

Everything Your New Home Needs — Lusso Collection

With Everything's Included®, Lennar has reimagined the homebuying experience by including the most desired home features at no extra cost to you. Features may vary by community and floorplan.



Exterior

Elegant front elevations with designer exterior stone and decorative shutters (per plan)
Beautiful and enduring concrete roof tiles
Quality CBS construction
Brick paver walkway, driveway, entry and patio areas (per plan)
Pre-selected designer exterior paint schemes
Convenient covered entry
Code compliant entry door
Impact resistant windows and sliding glass doors
Privacy fence in rear yard

18" x 18" ceramic tile in foyer, kitchen, great room, dining room, laundry, and A/C closet in a choice of decorator colors
Plush stain resistant carpeting with padding in designated areas
Raised-panel interior doors
Raised-panel bi-fold closet doors
Colonial style baseboards and door casings
Elegant interior door hardware
Designer quality paint on all walls and ceilings
Textured walls and ceilings in designated areas

Everything Your New Home Needs — Lusso Collection (cont.)

With Everything's Included®, Lennar has reimagined the homebuying experience by including the most desired home features at no extra cost to you. Features may vary by community and floorplan.



**EVERYTHING'S
INCLUDED®**



Rocker-style switches throughout
Cat6 wiring in kitchen, family room and master bedroom, home run to central distribution panel
Pre-wired for ceiling fan in family or great room and all bedrooms (per plan)
Smoke and carbon monoxide detectors throughout
Vinyl-clad ventilated closet shelving
Electric water heater
Central air conditioning and heating system
Kitchen cabinets with 36" uppers and brushed nickel hardware
Pantry closet with ventilated shelves
Porcelain countertops with 6" backsplash
Stainless steel kitchen sink and decorative faucet with sprayer
Food waste disposal
Quality stainless steel appliance package featuring
30" smooth surface electric range with self-cleaning oven
Over-the-range built-in microwave with recirculating vent
Multi-cycle dishwasher
Side-by-Side Style refrigerator
Recessed LED downlighting
Vanity cabinets with brushed nickel hardware in all baths

Everything Your New Home Needs — Lusso Collection (cont.)

With Everything's Included®, Lennar has reimagined the homebuying experience by including the most desired home features at no extra cost to you. Features may vary by community and floorplan.



**EVERYTHING'S
INCLUDED®**



Shower with clear glass enclosure or fixed glass panel (per plan)
Cultured marble countertops with integrated sinks and designer faucets in all baths
12"x12" Ceramic tile in all bathroom floors and shower walls
6"x 6" Ceramic tile on shower floor
Exhaust fans (per plan)
Recessed LED downlighting
Vanity mirror in all baths

Secondary Bathroom

Vanity cabinets with brushed nickel hardware in all baths
Cultured marble countertops with integrated sinks and designer faucets in all baths
Bathtub in secondary bath (per plan)
12"x12" Ceramic tile in all bathroom floors and shower walls
Exhaust fans (per plan)
Recessed LED downlighting
Vanity mirror in all baths

Laundry

Washer and dryer connections provided

Everything Your New Home Needs — Radiance Collection

With Everything's Included®, Lennar has reimagined the homebuying experience by including the most desired home features at no extra cost to you. Features may vary by community and floorplan.



**EVERYTHING'S
INCLUDED®**



Exterior

Elegant front elevations with designer exterior stone, wall tile and decorative shutters (per plan)

Beautiful and enduring concrete roof tiles

Quality CBS construction

Brick paver driveway, walkway, entry and patio areas (per plan)

Pre-selected designer exterior paint schemes

Convenient covered entry

Code compliant entry door

Impact Resistant windows and sliding glass doors

Interior

18" x 18" ceramic tile in foyer, kitchen, great room, family room, dining room, breakfast area, laundry and A/C closet in a choice of decorator colors

Plush stain resistant carpeting with padding in designated areas

Raised-panel interior doors

Raised-panel bi-fold closet doors

Colonial style baseboards and door casings

Elegant interior door hardware

Designer quality paint on all walls and ceilings

Textured walls and ceilings in designated areas

Everything Your New Home Needs — Radiance Collection (cont.)

With Everything's Included®, Lennar has reimagined the homebuying experience by including the most desired home features at no extra cost to you. Features may vary by community and floorplan.



**EVERYTHING'S
INCLUDED®**



Interior

Rocker-style switches throughout
Cat6 wiring in kitchen, family room and master bedroom, home run to central distribution panel
Pre-wired for ceiling fan in family or great room and all bedrooms (per plan)
Smoke and carbon monoxide detectors throughout
Vinyl-clad ventilated closet shelving
Gas water heater
Central air conditioning and heating system
Gypcrete flooring underlayment (on second floor)

Kitchen

Kitchen cabinets with 36" uppers and brushed nickel hardware
Pantry closet with ventilated shelves
Porcelain countertops with 6" backsplash
Stainless steel kitchen sink and decorative faucet with sprayer
Food waste disposal
Quality stainless steel appliance package featuring:
30" smooth surface electric range with self-cleaning oven
Over-the-range built-in microwave with recirculating vent
Multi-cycle dishwasher
Side-by-side style refrigerator

Owners Suite

Vanity cabinets with brushed nickel hardware in all baths

Everything Your New Home Needs — Radiance Collection (cont.)

With Everything's Included®, Lennar has reimagined the homebuying experience by including the most desired home features at no extra cost to you. Features may vary by community and floorplan.



Owners Suite

- Shower with clear glass enclosure in or fixed glass panel (per plan)
- Cultured marble countertops with integrated sinks and designer faucets in all baths
- 12"x12" Ceramic tile in all bathroom floors and shower walls
- 6"x6" Ceramic tile on shower floor
- Exhaust fans (per plan)
- Recessed LED downlighting
- Vanity mirror

Secondary Bathroom

- Vanity cabinets with brushed nickel hardware in all baths
- Shower with clear glass enclosure in or fixed glass panel (per plan)
- Cultured marble countertops with integrated sinks and designer faucets in all baths
- Bathtub in secondary bath (per plan)
- 12"x12" Ceramic tile in all bathroom floors and shower walls
- 6"x6" Ceramic tile on shower floor
- Exhaust fans (per plan)
- Recessed LED downlighting
- Vanity mirror in all baths

Laundry

- Washer and dryer connections provided
- Convenient ventilated shelf

Available homes

Prices and availability as of March 4, 2026. All subject to change.



Scan for map

Homesite	Price	Details	Plan	Address
● 1706	\$745,990	3 bd · 2 ba · 1 half ba · 1,730 ft ²	Aviana	
● 1701	\$814,990	2 bd · 2 ba · 1 half ba · 1,827 ft ²	Illara	
● 1704	\$784,990	3 bd · 2 ba · 1 half ba · 1,924 ft ²	Lunara	
● 1707	\$833,990	4 bd · 3 ba · 2,047 ft ²	Velora	



Community amenities

In addition to a manned security gate to provide peace of mind, Solterra enjoys a state-of-the-art clubhouse complemented by swimming pools, a fitness center and lush green parks.



Swimming Pool



Clubhouse



Swimming Pool



Clubhouse

